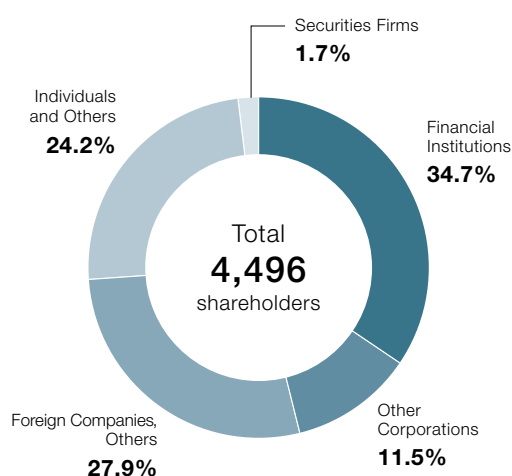


Stock Information

Stock

Authorized Shares	148,000,000
Shares Issued	41,426,000
Number of Shareholders	4,496

Distribution Chart

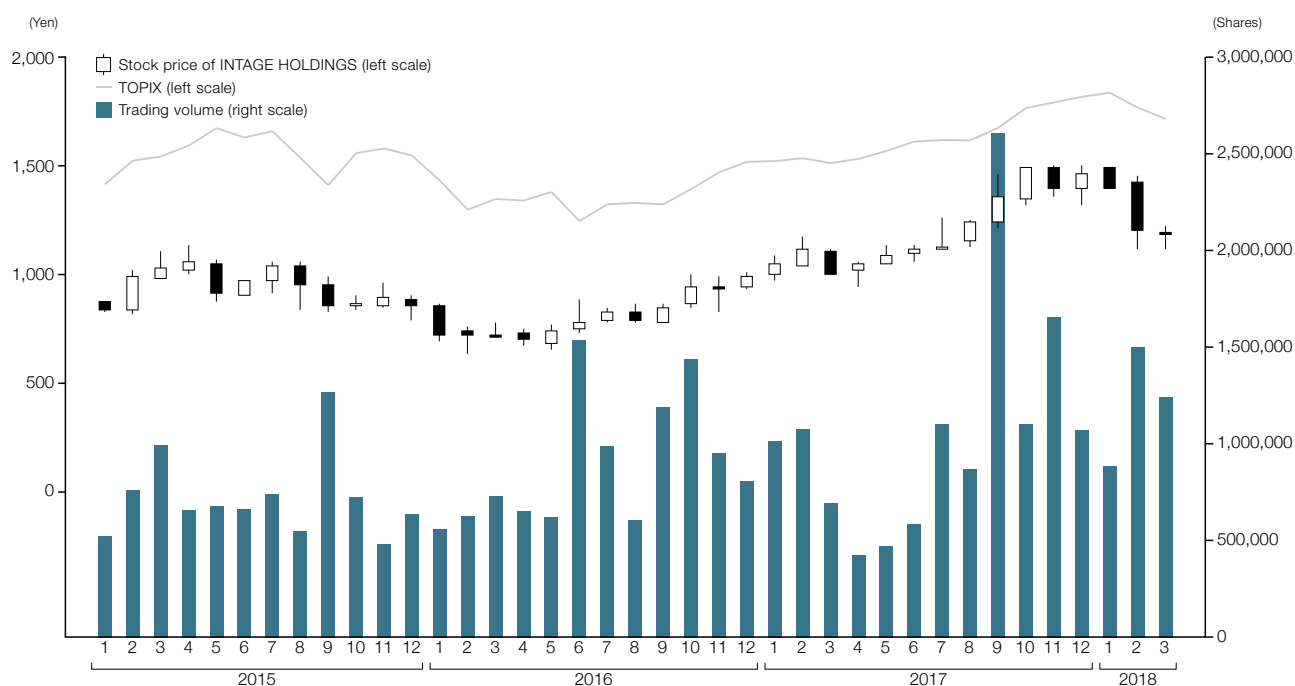


Major Shareholders

	Investment in INTAGE	
	Number of Shares Held	Shareholding Ratio (%)
Mizuho Trust & Banking Co., Ltd. as trustee for Retirement Benefit Trust of Eisai Co., Ltd. (reentrusted to Trust & Custody Services Bank, Ltd.)	3,600,000	8.7
BBH Fidelity Low-Priced Stock Fund (Principal All Sector Subportfolio)	3,354,800	8.1
INTAGE Group Employees' Stockholding Association	2,028,603	4.9
Goldman Sachs and Company Regular Account	1,989,435	4.8
Saitama Resona Bank, Ltd.	1,870,000	4.5
Hoei Jitsugyo Co., Ltd.	1,820,000	4.4
Mizuho Bank, Ltd.	1,400,000	3.4
The Dai-ichi Mutual Life Insurance Company	1,400,000	3.4
Daiei Real Estate & Development	1,256,000	3.0
BNP PARIBAS SEC SERVICES LUXEMBOURG JASDEC ABERDEEN GLOBAL CLIENT ASSETS	1,200,000	2.9

Note: Shareholding ratio is calculated after deducting treasury stock (10,440 shares).

Stock Price and Trading Volume



Note: The Company implemented a stock split at a ratio of two shares for each share of common stock on October 1, 2017. Accordingly, stock price and trading volume amounts for January 2015 and thereafter are prepared taking this stock split into account.